



SERVICE BULLETIN

Classification: RS01-001a	Reference: NTB01-005a	Date: October 7, 2004
------------------------------	--------------------------	--------------------------

ALL NISSAN VEHICLES; "D" RING RESIDUE CAN CAUSE SLOW SEAT BELT RETRACTION

This bulletin amends NTB01-005. Please discard all paper copies of the earlier version.

APPLIED VEHICLES: All Nissan Vehicles with front seat belt "D" rings

IF YOU CONFIRM:

Seat belt retraction of front seat belt(s) is slow, caused by "residue" build-up on the "D" ring(s),

NOTE: Slow seat belt retraction, if it occurs, may result in the following incidents after the seat belt is unbuckled:

- Seat belt latch plate hanging up on clothing,
- Seat belt latch plate becoming caught in the door,

ACTION

Use the "D" ring cleaning and refurbishing kit to:

- Clean the residue off of the "D" rings.
- Apply fluorine resin tape to the "D" rings.

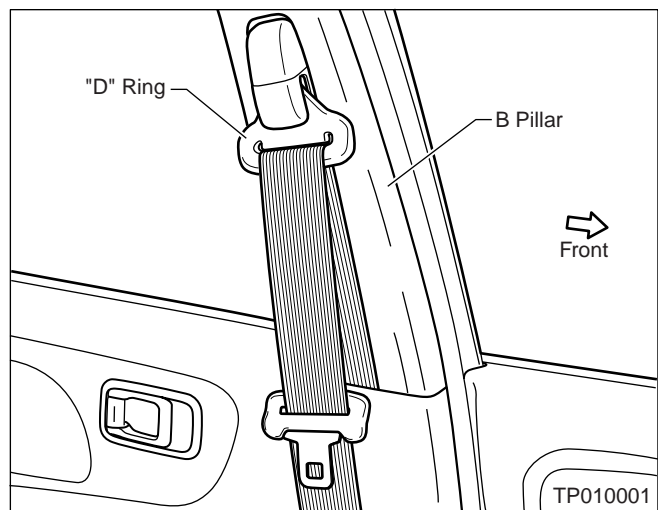


Figure 1

IMPORTANT: The purpose of "ACTIONS" (above) is to give you a quick idea of the work you will be performing. You **MUST** closely follow the entire Service Procedure (starting on page 2) as it contains information that is essential to successfully completing this repair.

Nissan Bulletins are intended for use by qualified technicians, not 'do-it-yourselfers'. Qualified technicians are properly trained individuals who have the equipment, tools, safety instruction, and know-how to do a job properly and safely. **NOTE:** If you believe that a described condition may apply to a particular vehicle, **DO NOT** assume that it does. See your Nissan dealer to determine if this applies to your vehicle.

PARTS INFORMATION

DESCRIPTION	PART #	QUANTITY
Seat Belt, Tape Set	87880-79900	1

CLAIMS INFORMATION

NOTE: This is the ONLY approved repair procedure for this incident. A claim to Nissan for the repair of this incident may be denied if the repair is not performed exactly as outlined in this bulletin.

Submit a Primary Failed Part (PP) line using the following claims coding:

DESCRIPTION	PFP	OP CODE	SYM	DIA	FRT
Clean "D"-ring and apply tape, both sides	87880-79900	VX04AA	ZH	21	0.4

NOTES:

- This is the only authorized repair for this incident. **DO NOT REPLACE** the front driver or passenger seat belt assemblies before first using the Service Procedure in this bulletin to clean the "D" rings.
- When this incident occurs, both front driver and passenger seat belt "D" rings must be serviced by using the Service Procedure provided in this bulletin.
- For 1996-99 Pathfinders built before December, 1998, see bulletin NTB00-003 for additional front seat belt retractor assembly information.

SERVICE PROCEDURE

1. Pull the affected seat belt more than 20 inches (500 mm) out of the B pillar seat belt retractor mechanism (see Figure 2).

2. Attach a binder clip (or similar clamping device) to the seat belt at the base of the retractor mechanism to allow for slack in the seat belt (see Figure 2).

CAUTION: Be careful not to damage the seat belt fabric when attaching or removing the clip.

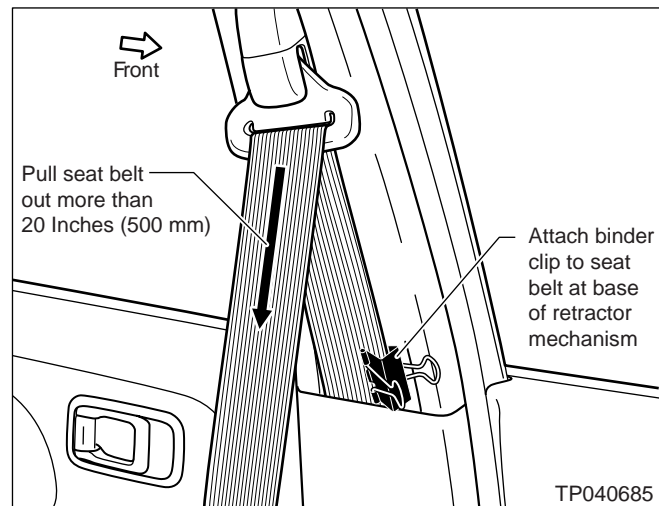


Figure 2

3. Insert the "D" ring cleaning wire under the seat belt; between the belt and the "D" ring (see Figure 3).
 - The "D" ring cleaning wire is provided in the kit that's listed in the Parts Information.

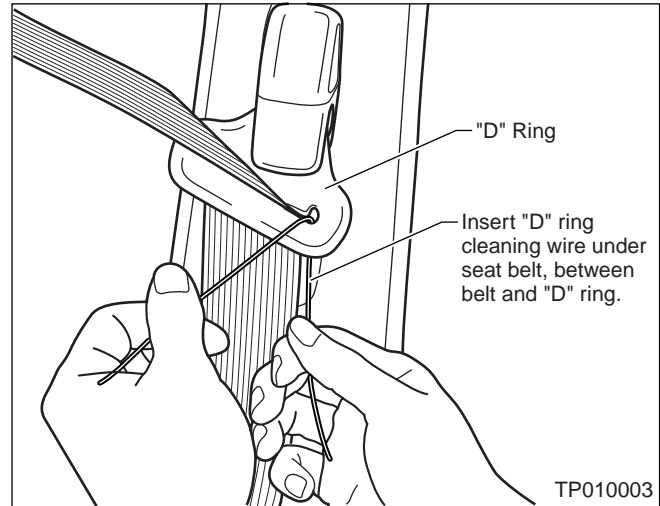


Figure 3

4. Pull the wire back and forth across the surface of the "D" ring.
 - Make sure all residue is removed from the "D" ring in all areas where it contacts the seat belt

NOTE:

- It is very important to remove all residue build-up from the "D" ring.
- If you don't remove all residue build-up, the fluorine resin tape won't stick properly.

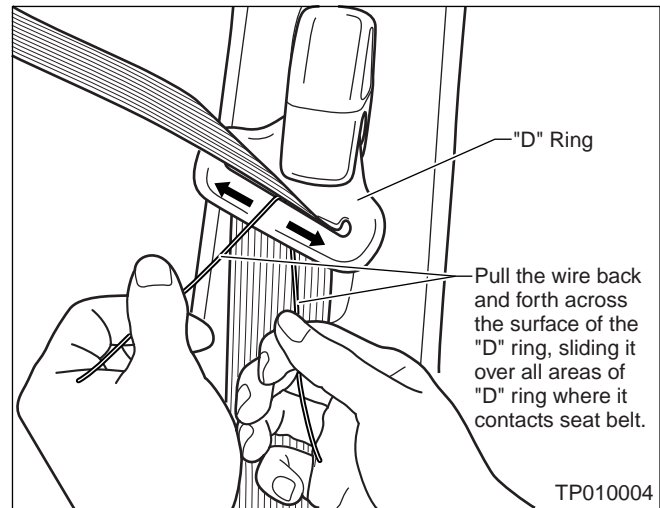


Figure 4

5. Peel off the top (smaller) backing sheet from one of the fluorine resin tapes (see Figure 5).

- Two fluorine resin tape pieces are provided in the kit.

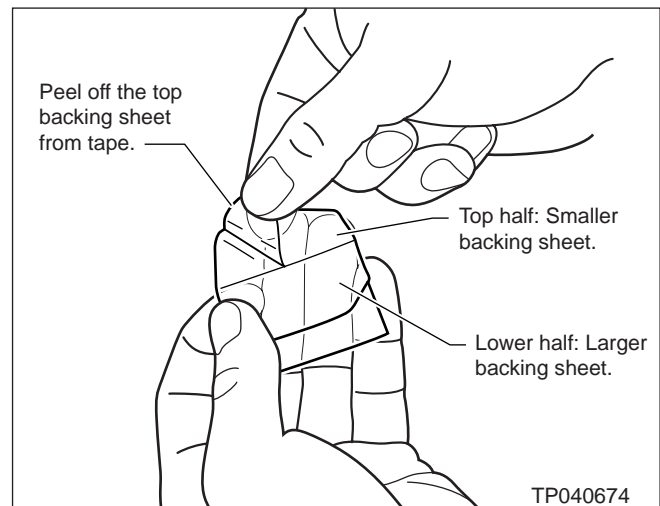


Figure 5

6. Place the fluorine resin tape (adhesive side toward you) against the seat belt as shown in Figure 6A.

NOTE:

- The sticky half should be down, toward the floor of the vehicle.
- The unexposed (not sticky yet) half should be up, toward the ceiling of the vehicle.

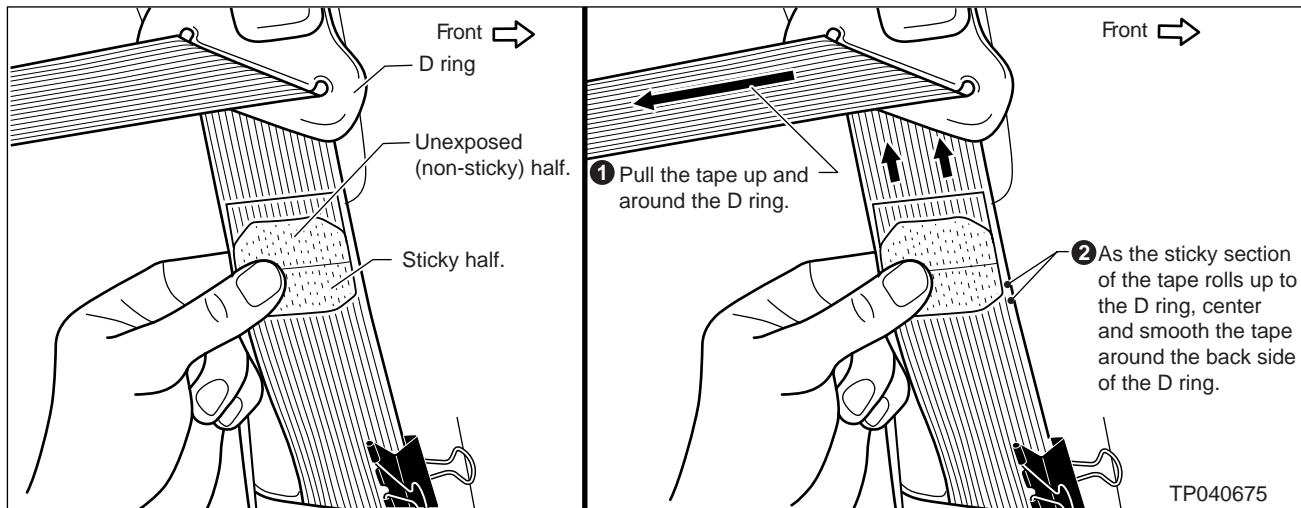


Figure 6A

Figure 6B

7. Pull on the top of the seat belt to roll the tape up and around the "D" ring (see Figure 6B).

8. As the tape rolls up to the "D" ring, center and smooth the tape around the back side of the "D" ring. Press the bubbles and wrinkles out with your fingers (see Figure 7).

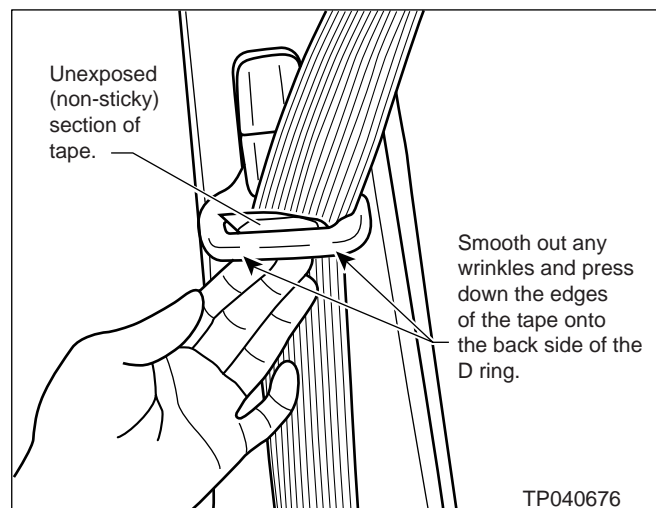
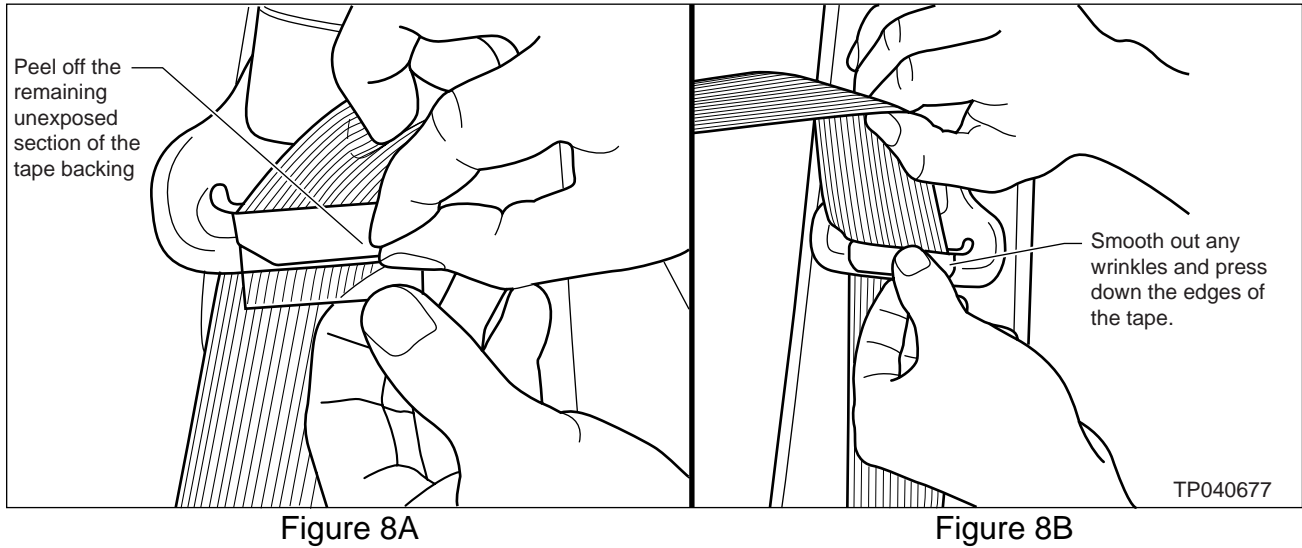


Figure 7

NOTE:

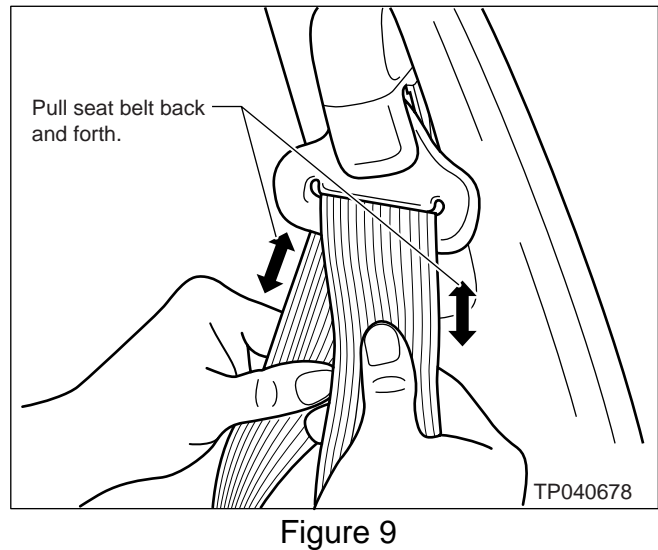
- Once the fluorine resin tape is applied to the "D" ring, it cannot be repositioned.
- Take care to properly attach the tape to the "D" ring.
- Center the tape correctly on the "D" ring and smoothly apply it to the "D" ring surface so that no wrinkles or ridges are present.
- Wrinkles or ridges in the tape may prevent the seat belt from moving smoothly through the "D" ring. If this should occur, replace the tape with a new piece.

9. Peel off the remaining tape backing (see Figure 8A).



10. Carefully apply the tape around the remainder of the "D" ring. Press down the edges and make sure there are no wrinkles (see Figure 8B).

11. Pull the seat belt back and forth against the tape-covered "D" ring to ensure that the tape is firmly applied (see Figure 9).



12. Remove the binder clip from the seat belt.

13. Confirm the seat belt moves smoothly and quickly through the "D" ring.

- Latch and unlatch it. Allow it to retract back into the retractor mechanism several times.

14. Repeat steps 1 through 13 on the remaining front seat belt.