



SERVICE BULLETIN

Classification:

BT99-022

Reference:

NTB99-045

Date:

June 29, 1999

2000 MAXIMA INTERIOR TRIM REMOVAL TIPS

APPLIED VEHICLES: 2000 Maxima (A33)

SERVICE INFORMATION

This bulletin provides helpful tips for removal and replacement of interior trim on the 2000 Maxima to minimize possible damage to those and/or nearby components.

SERVICE PROCEDURE

1. Center Console Removal:

To remove the center console, a metal screw located under the ashtray/coin box must be removed (see Figure 1).

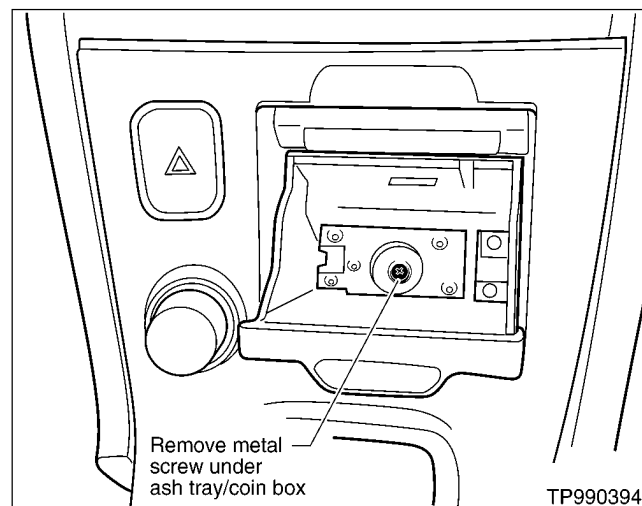


Figure 1

2. Cup Holder Removal:

A. Raise the center console (see Figure 2). See step 1 above for information about Center Console removal.

NOTE: Always retrieve any fasteners or clips that may fall off trim pieces to prevent potential rattle noises.

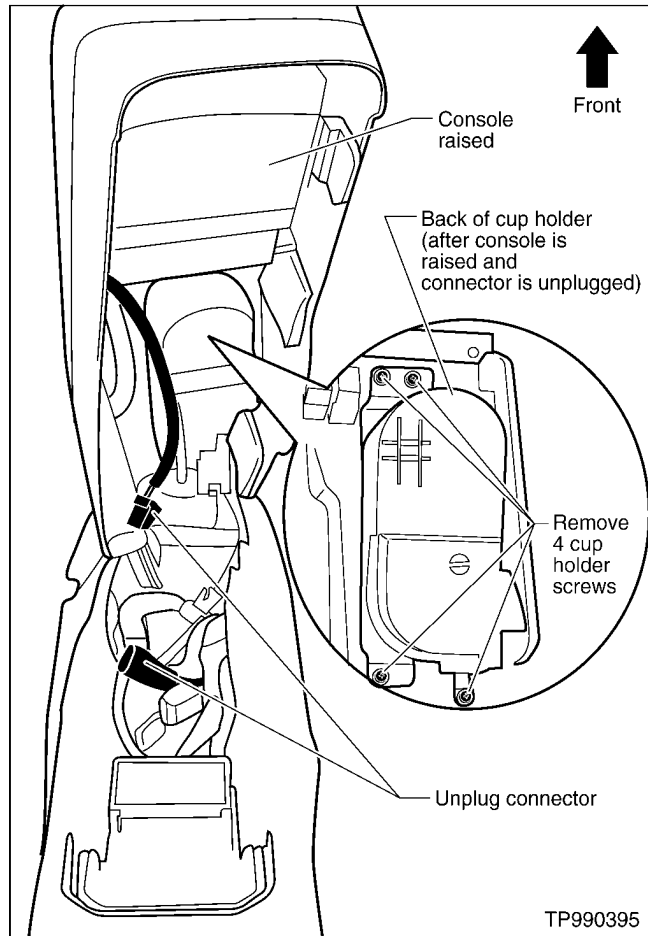


Figure 2

- B. Unplug the console connector (see Figure 2).
- C. Remove the four cup holder screws (see Figure 2 for cup holder screw locations).

3. Instrument Cluster Removal:

- A. Remove two screws that hold the face of the instrument cluster in place (see Figure 3 for screw locations).

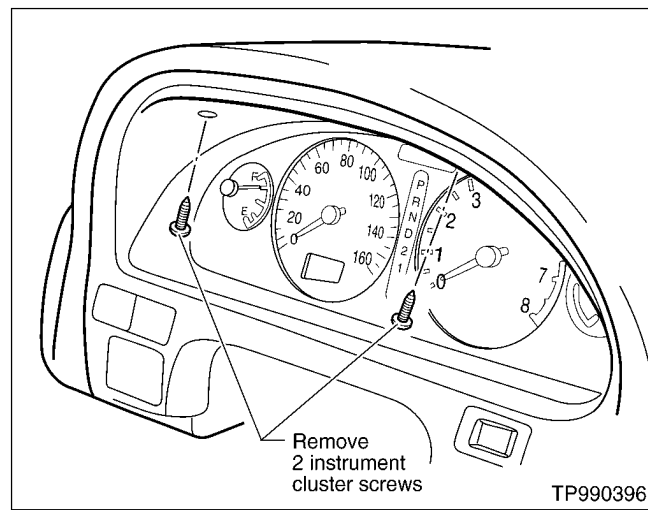


Figure 3

- B. Wrap a clean cloth around the removal tool (you may use a standard head screw driver as the removal tool).
- C. Insert the cloth wrapped removal tool between the instrument cluster and the instrument panel (see Figure 4).

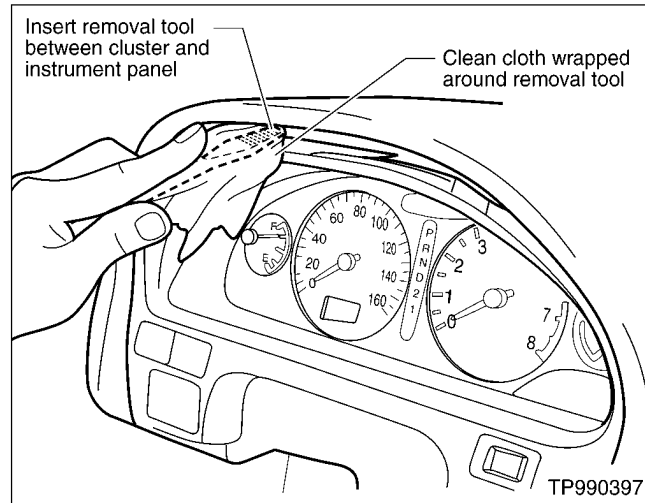


Figure 4

- D. Remove the instrument cluster.

CAUTION: Unplug the instrument cluster connector before completely removing the instrument cluster (see Figure 5).

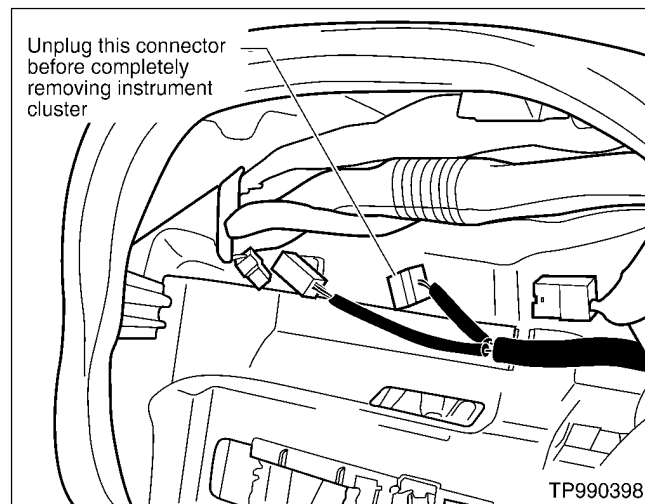


Figure 5

4. Map Light Removal:

- A. Insert a removal tool wrapped in a clean cloth between the right-hand side of the map light and the sunroof finisher (see Figure 6).

CAUTION: Do Not insert the removal tool on the left-hand side of the map light. Doing so may damage the map light.

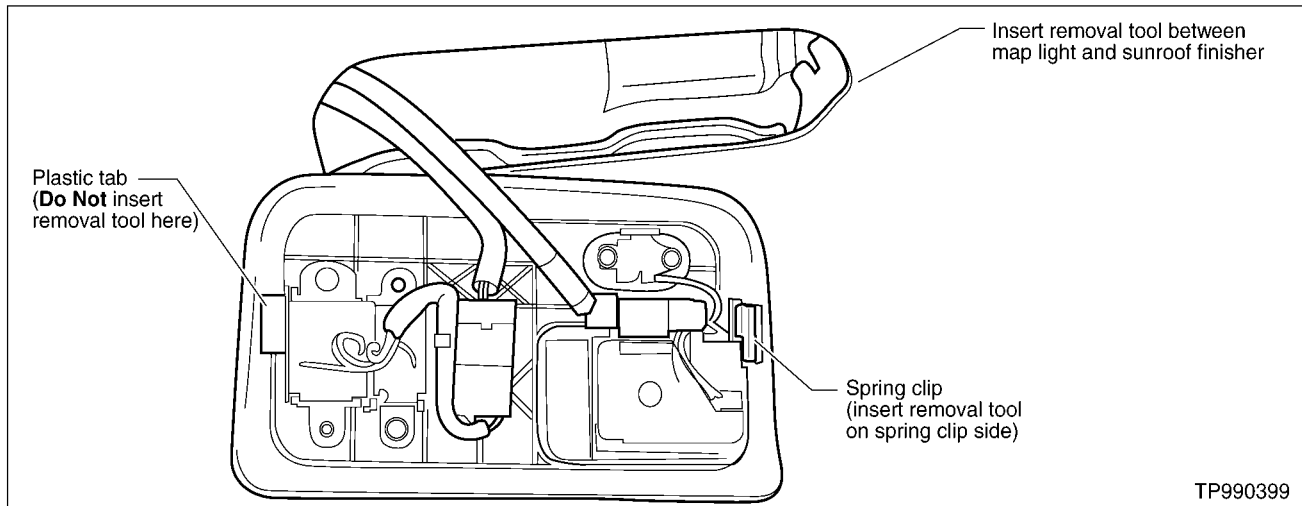


Figure 6

- B. Remove the Map light.

5. Clock Removal:

- A. Insert a removal tool wrapped in a clean cloth between the console and the left-hand side of the clock finisher (see Figure 7).

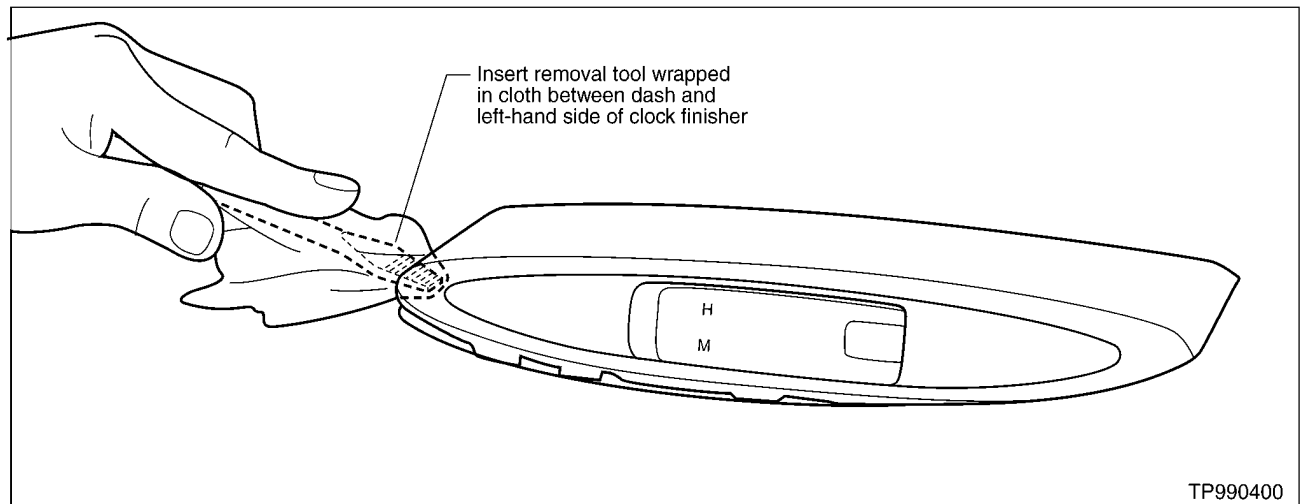


Figure 7

B. Remove the clock (see Figure 8).

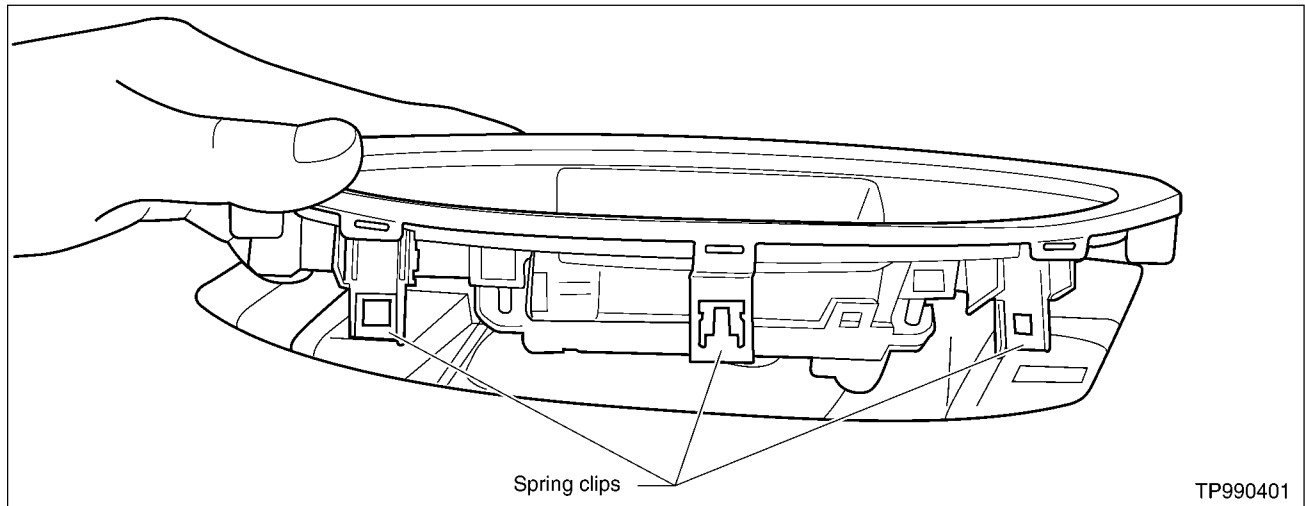


Figure 8

6. Door Handle Trim Piece Removal:

- A. Wrap a clean cloth around a small standard head screw driver.
- B. Insert cloth wrapped removal tool at the bottom of the door handle finisher (between the outer trim piece and the inner trim piece). Begin separating the outer trim piece from the inner trim piece (see Figure 9).

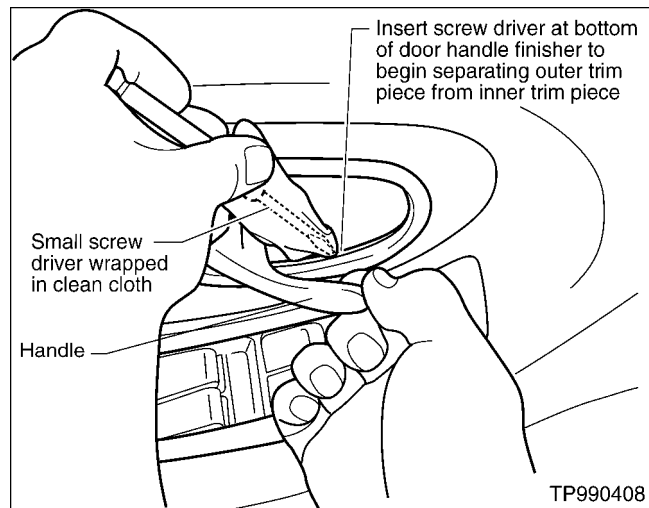


Figure 9

- C. Move the screw driver to the front part of the door handle trim. Continue separating the trim pieces (see Figure 10).

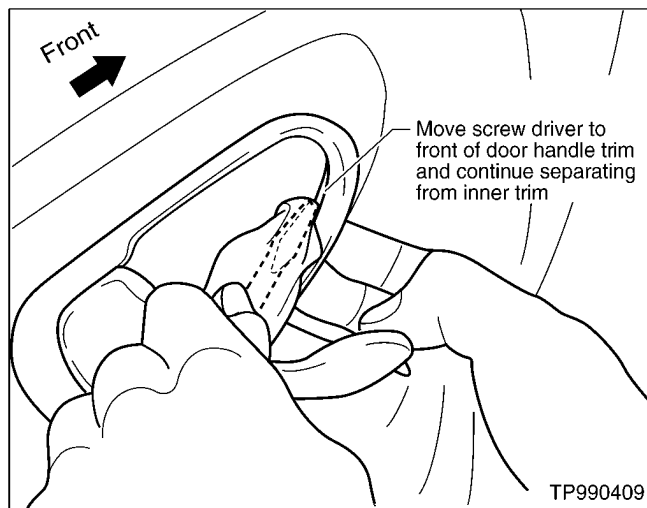


Figure 10

- D. Move the screw driver to the top part of the door handle trim, continuing separation from the inner trim (see Figure 11).

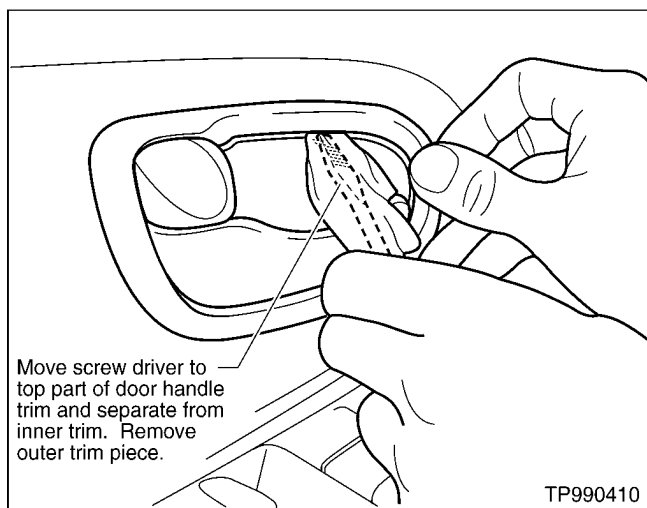


Figure 11

- E. Remove the outer door handle trim piece (see Figure 12 for a view of the trim piece removed).

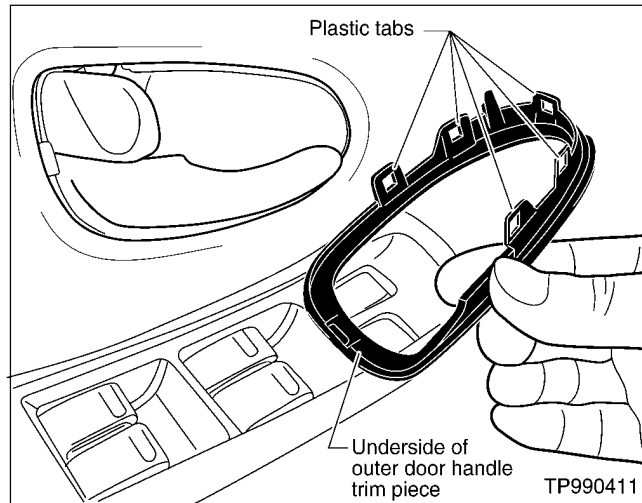


Figure 12

7. Front Door Buttons Panel Removal:

- A. Insert a removal tool wrapped in a clean cloth between the rear of the buttons panel finisher and the arm rest (see Figure 13).

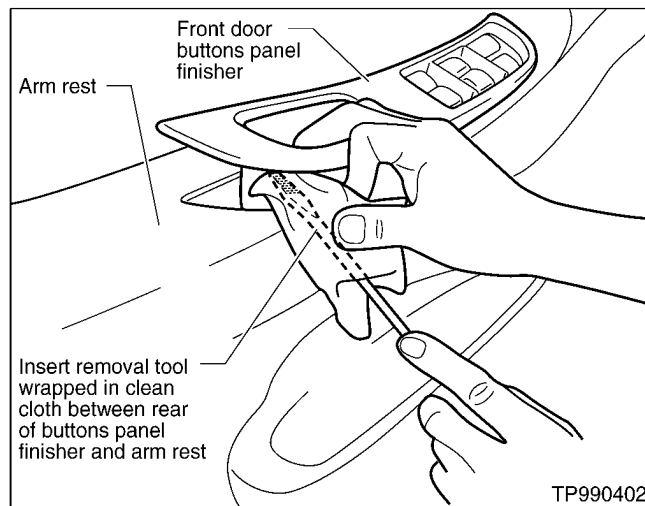


Figure 13

- B. Lift and remove the buttons panel finisher (see Figure 14 for a view of the finisher when removed).

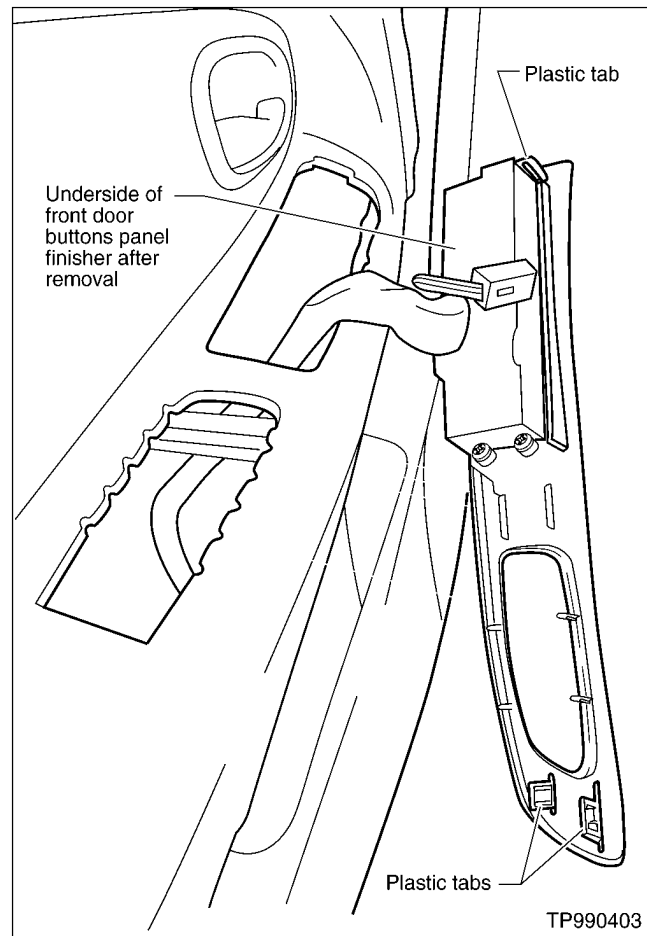


Figure 14

8. Door Finisher Removal:

- A. Remove all screws that hold the door finisher to the door.

- B. Insert your fingers in the slot located at the bottom of the door finisher (see Figure 15).

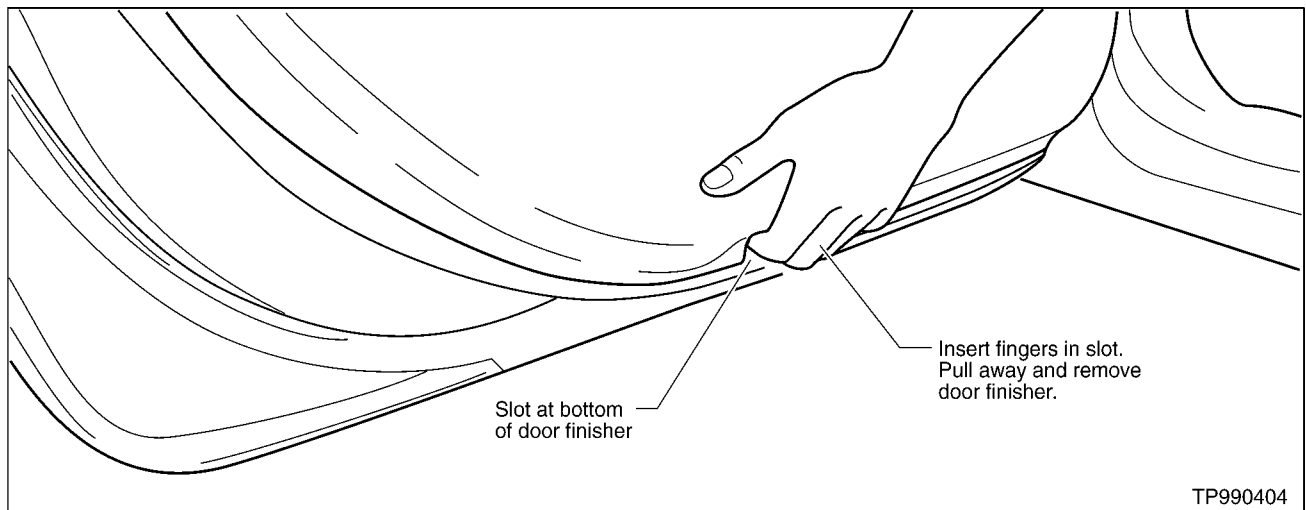


Figure 15

- C. Pull away and remove the door finisher.

9. Rear Door Buttons Trim Panel Removal:

- A. Insert a removal tool wrapped in a clean cloth between the rear of the arm rest and the rear door buttons trim panel. Lift up the panel (see Figure 16).

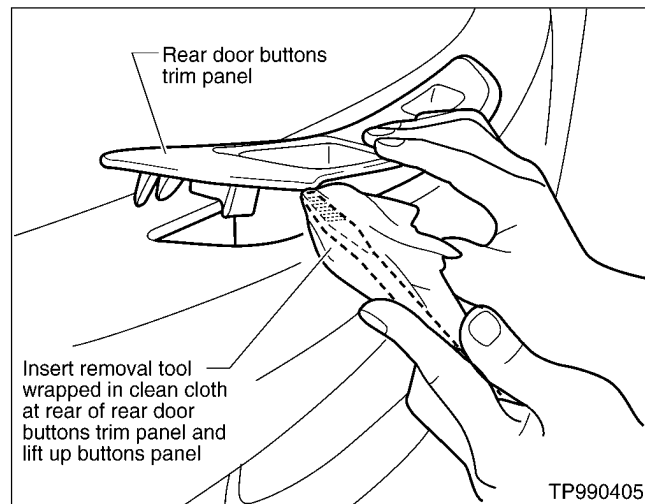


Figure 16

B. Move the removal tool to the front part of the door buttons panel. Lift up the front of the panel (see Figure 17).

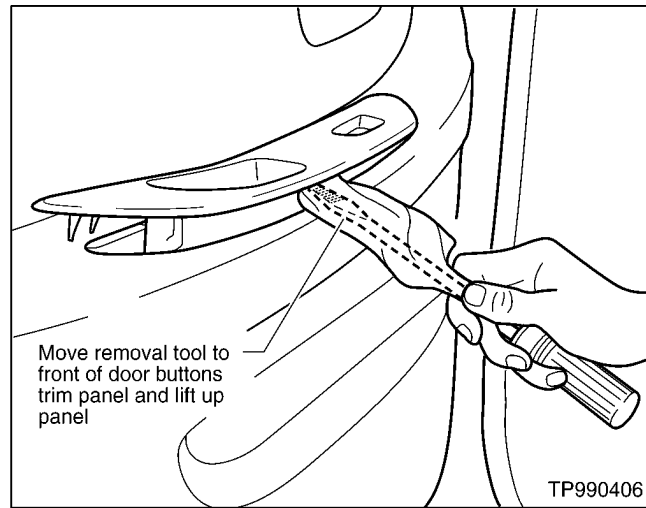


Figure 17

C. Remove the panel (see Figure 18 for a view of the panel when removed).

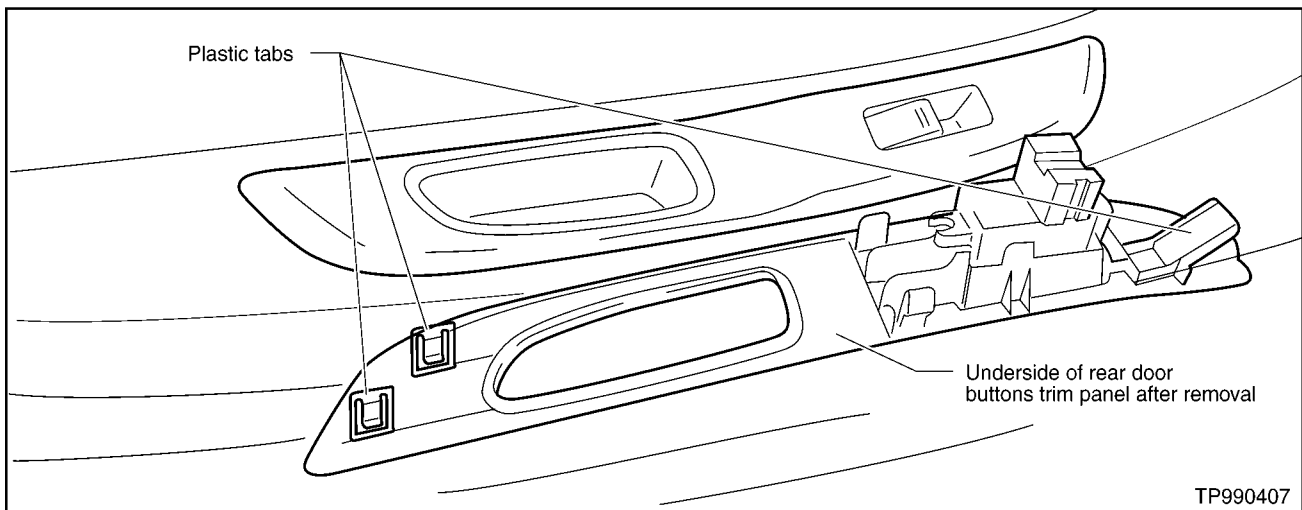


Figure 18